



MONTHLY MEMBERSHIP PROGRESS REPORT

District 29 I

Results as of: 09/30/2017

GMT: CINDY GREGG

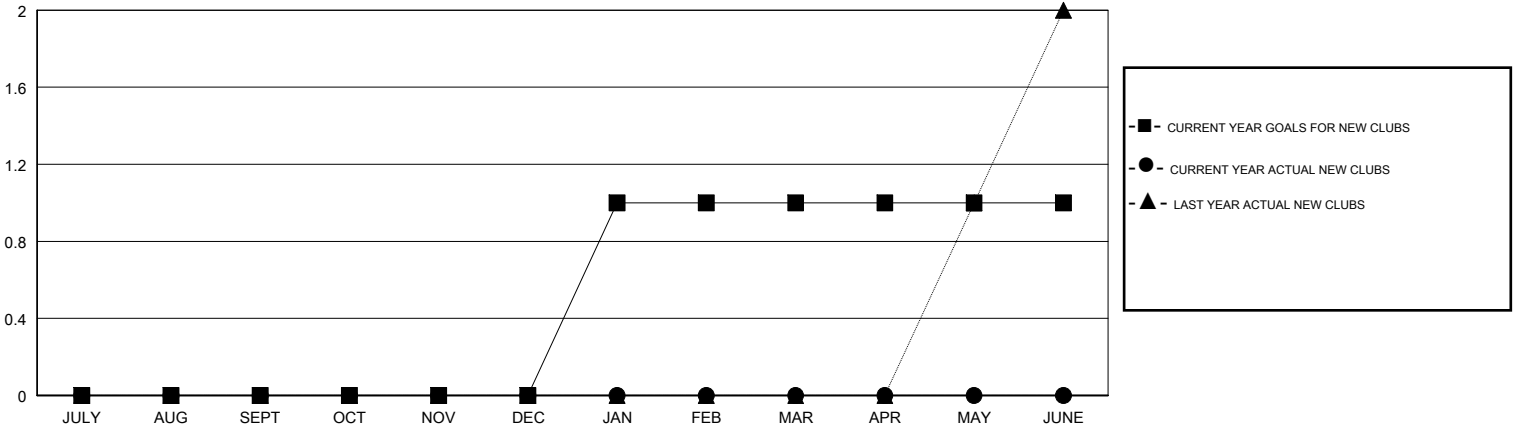
LOCATION WEST VIRGINIA

GMT CA

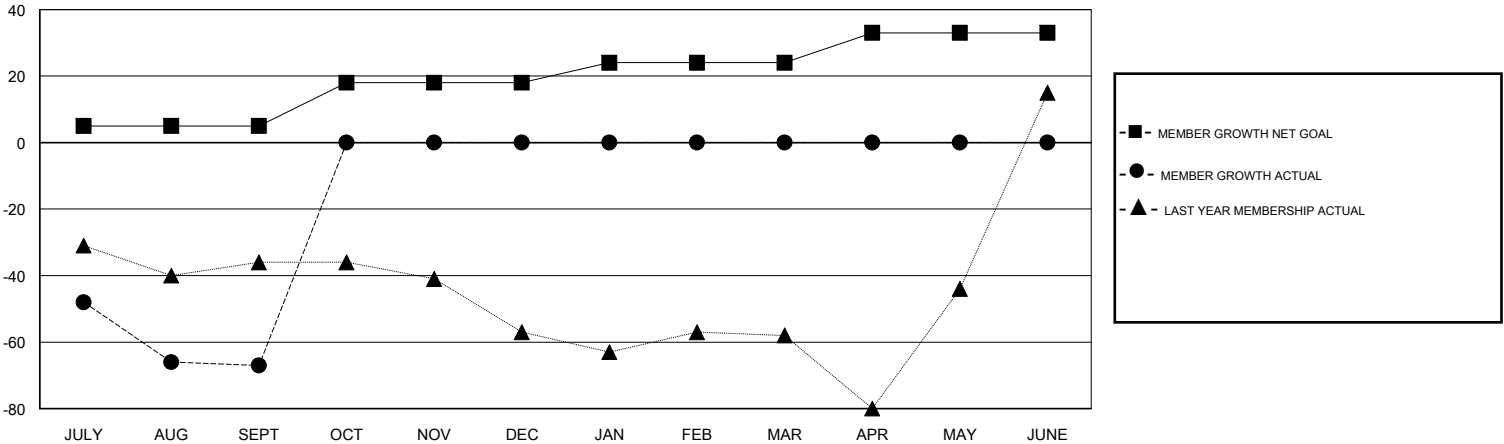
Clubs			
RESULTS FOR 2017-2018			
QUARTER	NEW CLUB GOAL	NEW CLUBS	DROPPED CLUBS
JULY/AUG/SEPT	0	0	0
OCT/NOV/DEC	0	0	0
JAN/FEB/MAR	1	0	0
APR/MAY/JUNE	0	0	0

Members			
RESULTS FOR 2017-2018			
QUARTER	MEMBER GROWTH NET GOAL	MEMBER GROWTH ACTUAL	DROPPED MEMBERS ACTUAL (including transfers)
JULY/AUG/SEPT	5	16	83
OCT/NOV/DEC	13	0	0
JAN/FEB/MAR	6	0	0
APR/MAY/JUNE	9	0	0

GOALS AND ACTUAL NEW CLUBS CUMULATIVE



GOALS AND ACTUAL MEMBERS CUMULATIVE



DROPPED CLUBS: 0	9 CLUBS OF 55 ADDED 1 OR MORE NEW MEMBERS	GENDER DISTRIBUTION MALE 1,031 (65.63%) FEMALE 540 (34.37%) Women Percentage Fiscal Year Goal: 35%
DROPPED MEMBERS DECEASED 10 CLUB CANCELLED 0 OTHER 73 TOTAL 83	CLICK HERE FOR CUMULATIVE MEMBERSHIP DATA	TOTAL FAMILY UNIT MEMBERS 469 FAMILY MEMBERS PAYING HALF DUES 238